

Technopolymer push-in fittings

SERIES TECNORAP - TECNORAP BLACK



Technorap series push-in fittings are manufactured in Italy, guaranteeing high quality standards according to the ISO norms of reference.

Ordering code

T 10 C 08 M5

FITTING BODY COLOUR + THRUST SLEEVE

- T** = Grey Body Green Thrust Sleeve
- TN** = Grey Body Black Thrust Sleeve
- TS** = Grey Body Grey Thrust Sleeve
- TA** = Grey Body Blue Thrust Sleeve
- TB** = Black Body Black Thrust Sleeve
- TBV** = Black Body Green Thrust Sleeve
- TBS** = Black Body Grey Thrust Sleeve
- TBA** = Black Body Blue Thrust Sleeve

MODEL TYPE

01 ... 90

FUNCTIONAL DENOMINATIONS

- C** = Tapered thread
- F** = Female thread / Threaded body
- L** = Extended elbow
- B** = Two-way banjo

TUBE CONNECTION

04 ... 16 = Tube diameter (mm)

THREADED CONNECTION

- M3; M5; 18; 14; 38; 12** = Thread size (M3; M5; 1/8; 1/4; 3/8; 1/2)
- 04 ... 16** = Tube diameter (mm)
- L0** = Version with plug
- V0** = Version with lateral plug

See assembly instructions in the appendix on page 211

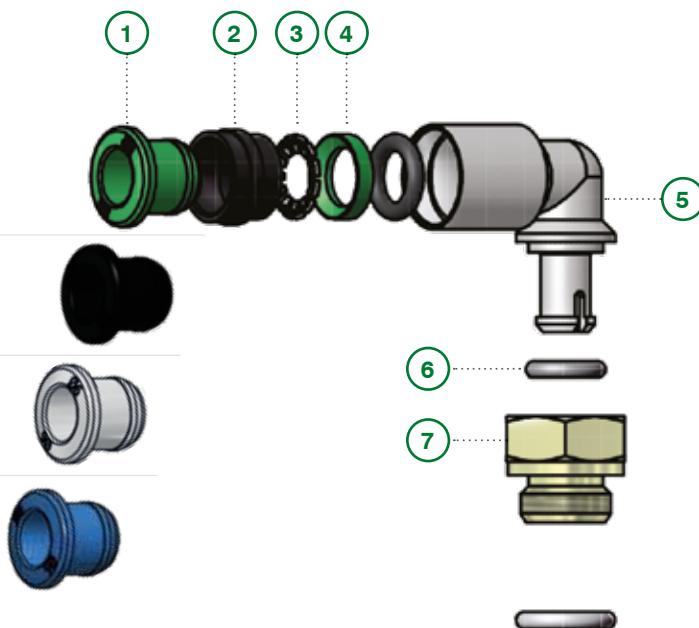
Series

• **T, TB**

• **TN**
on request

• **TS, TBS**
on request

• **TA, TBA**
on request



Components

- 1 Thrust sleeve
- 2 Lock ring
- 3 Crimping gripper
- 4 Supporting ring
- 5 Fitting body
- 6 O-Ring seal
- 7 Swivel base



Technical sheet

FLUIDS		Compressed air (for different fluid please contact our Technical Dept.)
APPLICATIONS		Pneumatic circuits, low pressure hydraulic applications, according to DIN 3861-3870 norms. Suitable for vacuum applications.
SUGGESTED TUBES		TPU (Polyurethane), PA11/PA12 (Polyurethane), TPE (Polyurethane), TPA (Polyurethane/Copolyester)
TUBES TOLERANCES		Diam. between 4 and 10 mm +/- 0,05 Diam. from 12 mm +/- 0,1
PROTECTION DEGREE		IP 68
TEMPERATURE AND PRESSURE	Recommended limit values	Temperatures and pressures usually depend by the technical features of the employed tubes, anyway it is suggested a limit working pressure of 12 bar and a temperature range between -20°C and +50°C
	Technical testing data	In the table below there are indicated the load traction resistance values and the main working and breaking limit (Pressure and Temperature) of the main commercial tubing.
	Note	For more complete informations please read the technical catalogue of your tube supplier.
THREAD TYPE		BSP parallel UNI-ISO 228; BSP tapered UNI-ISO 7; Metric ISO/R 262
MATERIALS	Body, sleeve, collar and back ring	POM copolymer ISO1043-1; Technopolymer glass-fiber reinforced
	Swivel stems and bases	Brass UNI EN 12164 CW614N
	Spring	Stainless steel AISI 301 austenitic
	Seals	NBR 70 DWGV-EN549 UL157

Additional technical informations

Each Tecno-RAP production batch is tested according to severe cyclics "lot breaker" controls along all the production period, which include shape observation, leakage verification, functionality, at the working pressure of 8 bar. Then all samples taken from the lot are tested by a traction machine which simulate a breaking pressure of 50 bar. Here below are indicated the traction loads (in Newton) for each size:

TUBE DIAMETER	Ø4	Ø6	Ø8	Ø10	Ø12
BREAKING LOAD	63 N	141 N	251 N	393 N	566 N

Important note: The values refer to the resistance of the crimping gripper, "core part" of both fittings, the technopolymer Tecno-RAP and the brass RAP, whereby homogeneous. The breaking experimental values measured, according to the diameter, were from 1.2 to 2.5 times higher.

Additional information regarding the working temperatures:

Further to all the necessary assessments on the use of the fittings in operating conditions different from how suggested in the initial technical sheet must be considered, with reference to temperatures, the nominal data regarding the type of the used tube and the limit imposed by the most critical component.

Series TECNORAP: **-20° +50°**
 Series RAP: **-20° +70°**
 Series OT: **-20° + 80°**
 Series OV: **-20° +150°**
 Series SS: **-20° +120°**

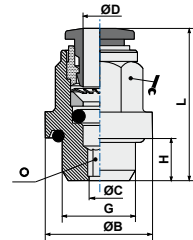
WORKING PRESSURE AND BREAKING PRESSURE AT DIFFERENT TEMPERATURES						
Example	T-20°C		T+23°C		T+60°C	
Tube 6x4 colored	Working P bar	Breaking P bar	Working P bar	Breaking P bar	Working P bar	Breaking P bar
TPU	18,7	74,8	10,0	40,0	5,2	20,8
PA11	37,4	149,6	20,0	80,0	10,4	41,6
PA12	48,6	168,3	26,0	90,0	10,4	36,0
PE	18,7	74,8	10,0	40,0	5,0	20,0

ART. **T01**

Straight male adaptor (parallel)



COD.	ØD	G	ØC	ØB	H	L				
T0104M10	4	M10x1,5	2,5	14,0	8,0	22,15	10	2,5	50	2,26
T010418	4	1/8	2,5	14,0	5,5	19,65	10	2,5	50	2,16
T010414	4	1/4	2,5	17,5	6,5	21,15	10	2,5	50	3,36
T0106M10	6	M10x1,5	4,0	14,0	8,0	27,60	12	4,0	50	3,18
T010618	6	1/8	4,0	14,0	5,5	25,10	12	4,0	50	3,10
T010614	6	1/4	4,0	17,5	6,5	26,60	12	4,0	50	4,26
T0108M10	8	M10x1,5	6,0	14,0	8,0	28,60	14	5,0	50	3,58
T010818	8	1/8	5,0	14,0	5,5	26,10	14	5,0	50	3,53
T010814	8	1/4	6,0	17,5	6,5	27,60	14	6,0	50	4,58
T011014	10	1/4	7,0	17,5	6,5	29,20	18	7,0	50	6,33

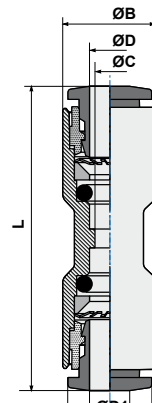


ART. **T03**

Straight connector



COD.	ØD	ØD1	ØC	ØB	ØB1	L		
T030400	4	4	3	9,5	9,5	32,30	50	1,96
T030406	4	6	3	9,5	11,5	34,25	50	2,39
T030600	6	6	5	11,5	11,5	36,70	50	3,00
T030608	6	8	5	11,5	13,5	37,70	50	3,27
T030800	8	8	7	13,5	13,5	38,20	50	3,53
T030810	8	10	7	13,5	17,0	40,75	50	5,03
T031000	10	10	9	17,0	17,0	42,90	50	6,04
T031012	10	12	9	17,0	20,0	44,50	50	5,04
T031200	12	12	10	20,0	20,0	46,20	25	9,06
T031600	16	16	13	26,5	26,5	64,00	10	28,10

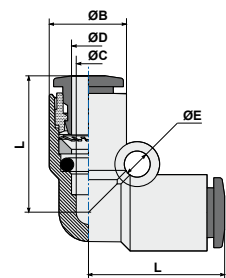


ART. **T04**

Elbow connector



COD.	ØD	ØC	ØB	ØL	ØE		
T040400	4	3	9,5	17,35	3,20	50	2,21
T040600	6	5	11,5	21,10	3,20	50	3,28
T040800	8	7	13,5	23,10	3,20	50	4,14
T041000	10	9	17,0	26,70	4,30	50	7,21
T041200	12	10	20,0	28,90	4,20	25	10,98
T041600	16	13	26,5	33,00	*	10	26,80

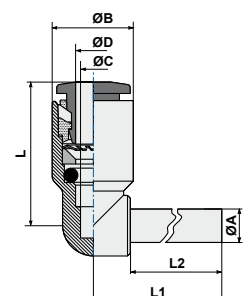


ART. **T04L0**

Plug-in elbow connector



COD.	ØD	ØC	ØB	L	L1	ØA	L2		
T0404L0	4	3	9,5	17,35	20,75	4	16,7	50	1,39
T0406L0	6	5	11,5	21,10	24,25	6	19,5	50	2,18
T0408L0	8	7	13,5	23,10	27,25	8	21,0	50	2,96
T0410L0	10	9	17,0	26,70	31,80	10	24,0	50	5,07
T0412L0	12	10	20,0	28,90	36,00	12	25,0	25	8,00

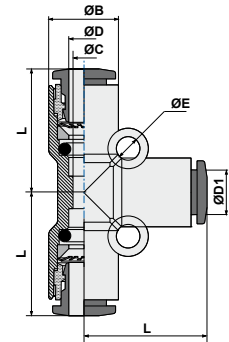


ART. **T05**

T connector



COD.	ØD	ØD1	ØC	ØB	L	ØE		
T050400	4	4	3,0	9,50	17,35	3,2	50	3,16
T050604	6	4	5,3	13,00	19,10	3,2	50	8,20
T050600	6	6	5,0	11,50	21,10	3,2	50	4,72
T050806	8	6	7,1	14,40	22,70	3,2	25	11,07
T050800	8	8	7,0	13,50	23,10	3,2	50	5,96
T051008	10	8	9,3	18,40	27,90	4,2	25	21,85
T051000	10	10	9,0	17,00	26,70	4,3	25	10,70
T051210	12	10	10,0	21,00	29,90	4,2	10	26,78
T051200	12	12	10,0	20,00	28,90	4,2	10	26,78
T051600	16	16	13,0	26,50	32,00	*	10	37,00

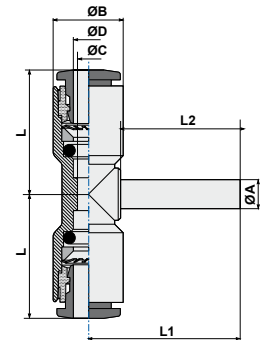


ART. **T05LO**

Plug-in T connector (center)



COD.	ØD	ØC	ØB	L	L1	ØA	L2		
T0504L0	4	3	9,5	17,2	20,8	4	16,7	50	2,26
T0506L0	6	5	11,5	20,8	24,3	6	19,5	50	3,51
T0508L0	8	7	13,5	23,0	27,3	8	21,0	50	4,66
T0510L0	10	9	17,0	26,4	31,8	10	24,0	25	5,64
T0512L0	12	10	20,0	28,9	36,0	12	25,0	10	7,11

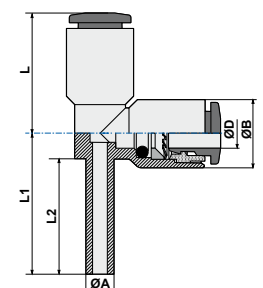


ART. **T05V0**

Plug-in T connector (lateral)

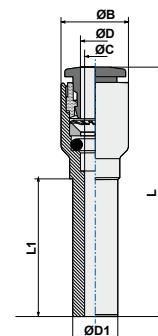


COD.	ØD	ØB	L	L1	ØA	L2		
T0506V0	6	11,5	20,8	24,3	6	19,5	50	3,42
T0508V0	8	13,5	23,0	27,3	8	21,0	50	4,54
T0510V0	10	17,0	26,4	31,8	10	24,0	25	7,65
T0512V0	12	20,0	28,9	36,0	12	25,0	10	8,10

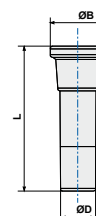


ART. T08
Reducer

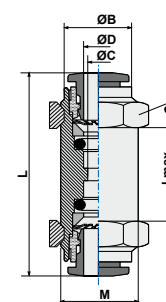

COD.	ØD1	ØD	ØC	ØB	L	L1		
T080604	6	4	3	9,5	35,65	19,50	50	1,37
T080804	8	4	3	9,5	37,15	21,00	50	1,60
T081004	10	4	3	9,5	40,15	24,00	25	1,97
T081204	12	4	3	9,5	41,15	25,00	25	2,22
T080806	8	6	5	11,5	39,35	23,00	50	2,10
T081006	10	6	5	11,5	42,35	24,00	25	2,49
T081206	12	6	5	11,5	43,35	25,00	25	2,80
T081008	10	8	7	13,5	43,10	26,25	25	2,74
T081208	12	8	7	13,5	44,10	25,00	25	3,00
T081210	12	10	9	17,0	46,45	27,55	25	4,40


ART. T09
Plug

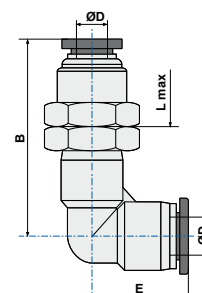

COD.	ØD	ØB	L		
T090400	4	7,0	25,0	100	0,43
T090600	6	9,5	27,5	100	0,84
T090800	8	12,0	30,0	100	1,39
T091000	10	14,0	32,5	100	2,04
T091200	12	16,0	35,0	100	2,67


ART. T10
Bulkhead connector


COD.	ØD	ØB	ØC	L	M	Lmax			
T100400	4	9,5	3	32,0	11x1	8	14	50	7,78
T100600	6	11,5	5	36,1	14,1	12	17	50	11,05
T100800	8	13,5	7	38,0	16x1	15	18	50	10,93
T101000	10	17,5	9	42,3	20x1	17	24	25	25,34
T101200	12	20	10	46,2	22x1	20	26	25	33,12


ART. T10L
Elbow bulkhead


COD.	ØD	M	B	E	H	Lmax	CH		
T10L0400	4	12x1	28,5	19,0	14,0	6,0	14	25	17,77
T10L0600	6	14x1	32,1	19,2	17,0	7,0	17	25	28,99
T10L0800	8	16x1	39,4	23,0	19,0	7,5	19	25	39,23
T10L1000	10	20x1	48,8	28,2	24,0	9,5	24	25	63,06
T10L1200	12	22x1	49,5	29,5	27,0	10,0	26	10	79,66

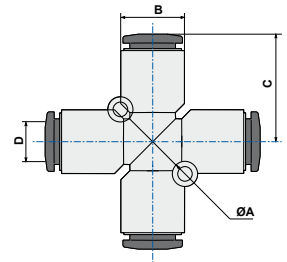


ART. **T11**

Cross connector



COD.	ØD	ØB	ØA	C		
T110400	4	9,5	17,4	3,2	25	4,02
T110600	6	11,5	21,1	3,2	25	6,20
T110800	8	13,5	23,1	3,2	25	7,79
T111000	10	17,0	26,7	4,2	10	14,06
T111200	12	21,0	29,5	4,3	10	34,38

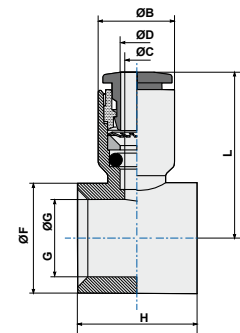


ART. **T13**

Single banjo body



COD.	ØD	G*	ØC	ØB	ØG	H	L	ØF		
T1304M5	4	M5	3	9,5	5,00	10	19,65	8,0	50	1,33
T130418	4	1/8	3	9,5	9,90	15	21,25	14,0	50	2,37
T130618	6	1/8	5	11,5	9,90	15	24,60	14,0	50	2,85
T130614	6	1/4	5	11,5	13,30	17	25,80	18,0	50	3,77
T130818	8	1/8	7	13,5	9,90	15	24,90	14,0	50	3,09
T130814	8	1/4	7	13,5	13,30	17	26,60	18,0	50	3,95
T130838	8	3/8	7	13,5	16,75	20	28,10	21,3	50	4,89
T131014	10	1/4	9	17,0	13,30	17	28,70	18,0	50	5,36
T131038	10	3/8	9	17,0	16,75	20	30,20	21,3	25	6,22
T131012	10	1/2	9	17,0	13,30	24	33,20	26,0	25	6,78
T131238	12	3/8	10	20,0	16,75	20	31,40	21,3	25	7,51
T131212	12	1/2	10	20,0	21,00	24	34,90	26,0	25	9,53
T13R04M5	4	M5	3	9,5	6,00	10	19,90	9,0	50	1,76
T13R06M5	6	M5	5	11,5	6,00	10	22,10	9,0	50	1,26



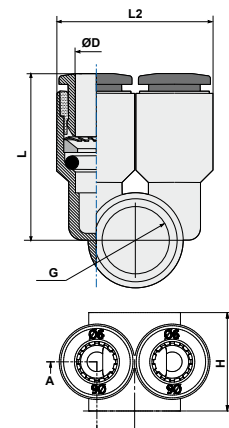
G* = Stem thread. See page 95 of stem section.

ART. **T13B**

Single branch body



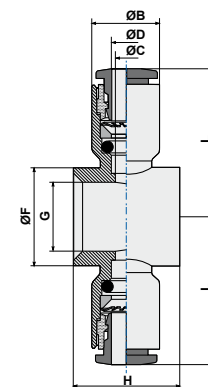
COD.	ØD	G*	H	L	L2		
T13B04M5	4	M5	10	19,7	19	50	2,39
T13B0618	6	1/8	15	24,6	23	50	4,40
T13B0814	8	1/4	17	26,6	27	50	6,06
T13B1038	10	3/8	20	30,2	34	25	9,88
T13B1212	12	1/2	24	34,9	40	10	15,36



G* = stem thread. See page 95 of stems section.
H = stem site length

ART. T14
Double banjo body

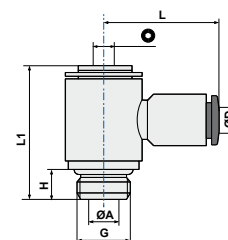

COD.	ØD	G*	ØC	ØB	H	ØF	L		
T1404M5	4	M5	3	9,5	10	8,00	19,5	50	2,24
T140418	4	1/8	3	9,5	15	14,00	21,1	50	3,33
T140618	6	1/8	5	11,5	15	14,00	24,3	50	5,10
T140838	8	3/8	7	13,5	20	21,30	28,0	25	6,48
T141038	10	3/8	9	17,0	20	21,30	29,9	25	8,89
T141012	10	1/2	9	17,0	24	26,00	30,0	10	11,19
T141238	12	3/8	10	20,0	20	21,30	31,4	25	11,57
T141212	12	1/2	10	20,0	24	26,00	34,9	10	14,21



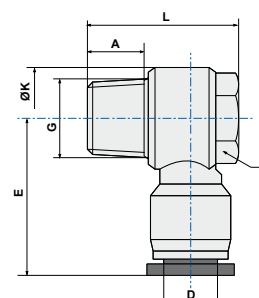
G*= Stem thread. See page 95 of stem section.

ART. T15
Complete single banjo (rotating under pressure)


COD.	ØD	G	ØA	H	L1	L			
T1504M5	4	M5	2,0	4,0	17,8	19,65	2,5	50	3,54
T1504M6	4	M6	2,0	5,0	18,8	19,65	2,5	50	3,96
T150418	4	1/8	5,5	5,5	24,5	21,25	3,0	50	11,87
T150618	6	1/8	5,5	5,5	24,5	24,60	3,0	50	12,29
T150614	6	1/4	7,8	6,5	27,8	25,80	4,0	50	22,36
T150818	8	1/8	5,5	5,5	24,5	24,90	3,0	50	12,67
T150814	8	1/4	7,8	6,5	27,8	26,60	4,0	50	21,89
T150838	8	3/8	10,0	7,5	32,5	28,10	5,0	25	37,40
T151014	10	1/4	7,8	6,5	27,8	28,70	4,0	25	23,86
T151038	10	3/8	10,0	7,5	32,5	30,20	5,0	25	38,54
T151012	10	1/2	12,0	9,0	38,8	33,20	8,0	10	37,55
T151238	12	3/8	10,0	7,5	32,5	31,40	5,0	10	39,91
T151212	12	1/2	12,0	9,0	38,8	34,90	8,0	10	44,50


ART. T15C
Complete single banjo tapered


COD.	ØD	G	A	L	ØK	E			
T15C0418	4	1/8	7,5	23,5	14,4	22,40	12,0	50	12,22
T15C0618	6	1/8	7,5	23,5	14,4	22,90	12,0	50	12,95
T15C0614	6	1/4	9,5	26,5	18,3	25,00	14,0	50	21,03
T15C0638	6	3/8	10,5	32,0	22,0	26,60	19,0	25	37,28
T15C0818	8	1/8	7,5	23,5	14,4	25,60	12,0	50	13,66
T15C0814	8	1/4	9,5	26,5	18,3	28,70	14,0	50	12,95
T15C0838	8	3/8	10,5	32,0	22,0	29,60	19,0	25	37,97
T15C1014	10	1/4	9,5	26,5	18,3	32,60	14,0	25	25,63
T15C1038	10	3/8	10,5	32,0	22,0	33,10	19,0	25	13,66
T15C1012	10	1/2	13,5	38,5	28,0	36,10	24,0	10	21,84
T15C1238	12	3/8	10,5	32,0	22,0	35,40	19,0	10	37,98
T15C1212	12	1/2	13,5	38,5	28,0	36,40	24,0	10	25,63

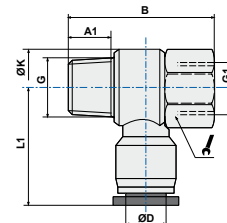


ART. **T15FC**

Female complete single banjo tapered



COD.	ØD	G/G1	L1	A1	B	ØK			
T15FC0418	4	1/8	22,4	7,5	29,0	14,40	14,0	50	16,26
T15FC0414	4	1/4	25,0	9,5	35,0	18,30	17,0	50	29,78
T15FC0618	6	1/8	22,9	7,5	29,0	14,40	14,0	50	16,81
T15FC0614	6	1/4	25,0	9,5	35,0	18,30	17,0	50	29,62
T15FC0818	8	1/8	25,6	7,5	29,0	14,40	14,0	50	17,68
T15FC0814	8	1/4	28,7	9,5	35,0	18,30	17,0	50	30,66
T15FC0838	8	3/8	29,6	10,5	40,0	22,00	21,0	25	46,70
T15FC1014	10	1/4	32,6	9,5	35,0	18,30	17,0	25	33,97
T15FC1038	10	3/8	33,1	10,5	40,0	22,00	21,0	25	49,53
T15FC1012	10	1/2	36,1	13,5	47,5	28,00	24,0	10	67,13
T15FC1238	12	3/8	35,4	10,5	40,0	22,00	21,0	10	51,20
T15FC1212	12	1/2	36,4	13,5	47,5	28,00	24,0	10	69,13

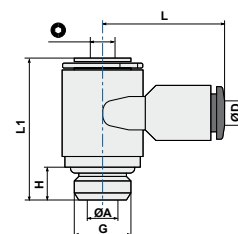


ART. **T15B**

Single banjo universal male elbow



COD.	ØD	G	ØA	H	L1	L	Ø		
T15B04M5	4	M5	2,0	4,0	17,8	19,7	2,5	50	4,57
T15B0618	6	1/8	5,5	5,5	24,5	24,6	3,0	50	13,73
T15B0814	8	1/4	7,8	6,5	27,8	26,6	4,0	50	24,51
T15B1038	10	3/8	10,0	7,5	32,5	30,2	5,0	25	44,78
T15B1212	12	1/2	12,0	9,0	38,8	34,9	8,0	10	77,84

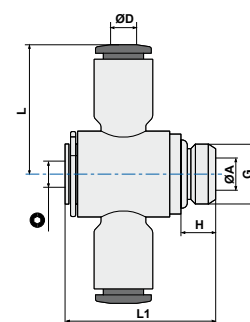


ART. **T16**

Complete double banjo (rotating under pressure)



COD.	ØD	G	ØA	H	L1	L	Ø		
T1604M5	4	M5	2	4,0	17,8	19,5	2,5	50	4,48
T160418	4	1/8	5,5	5,5	24,5	21,1	3,0	50	55,00
T160618	6	1/8	5,5	5,5	24,5	24,3	3,0	50	38,55
T160838	8	3/8	7,5	7,5	32,5	28,0	5,0	25	67,55
T161038	10	3/8	7,5	7,5	32,5	30,0	5,0	25	48,90
T161012	10	1/2	9,0	9,0	38,8	30,0	8,0	10	48,65
T161238	12	3/8	7,5	7,5	32,5	31,5	5,0	25	44,10
T161212	12	1/2	9,0	9,0	38,8	35,0	8,0	10	51,16

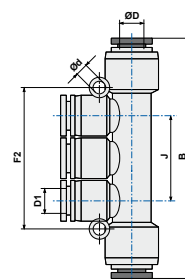


ART. **T18**

Triple branch union

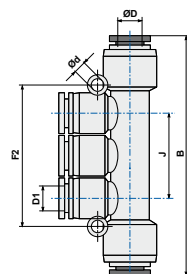


COD.	ØD	ØD1	J	B	Ød	F2		
T180604	6	4	26,0	60,3	3,2	42,0	25	16,05
T180804	8	4	26,0	61,7	3,2	42,0	25	15,89
T180806	8	6	26,0	61,7	3,2	42,0	25	15,66
T181006	10	6	29,2	83,0	4,2	48,0	10	27,15
T181008	10	8	29,2	83,0	4,2	48,0	10	27,50

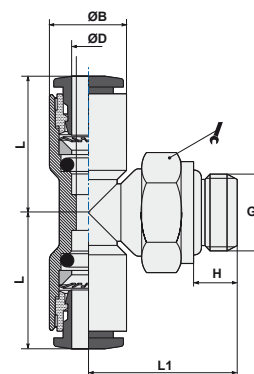


ART. T18G
Male triple branch


COD.	ØD	D1	G	A	B	J		Ød		
T18G0418	4	4	1/8	5,5	67,2	26	14	3,2	25	25,26
T18G0414	4	4	1/4	7,5	69,7	26	17	3,2	25	31,01
T18G0438	4	4	3/8	7,5	69,7	26	20	3,2	10	152,50
T18G0618	6	6	1/8	5,5	67,2	26	14	3,2	25	25,51
T18G0614	6	6	1/4	7,5	69,7	26	17	3,2	25	30,52
T18G0638	6	6	3/8	7,5	70,2	26	20	3,2	10	157,40
T18G0612	6	6	1/2	9	72,7	26	24	3,2	10	207,40
T18G0818	8	8	1/8	5,5	87,8	29	14	3,2	10	37,54
T18G0814	8	8	1/4	7,5	90,3	29	17	3,2	10	41,48
T18G0838	8	8	3/8	7,5	90,8	29	20	3,2	10	47,77
T18G0812	8	8	1/2	9,0	93,3	29	24	3,2	10	259,20
T18G1018	10	10	1/8	5,5	99,0	37	14	4,2	10	235,00
T18G1014	10	10	1/4	7,5	101,5	37	17	4,2	10	58,26
T18G1038	10	10	3/8	7,5	101,5	37	20	4,2	10	58,09
T18G1012	10	10	1/2	9	105,0	37	24	4,2	10	293,00


ART. T20
Swivel male stud T parallel


COD.	ØD	G	ØB	H	L	L1			
T2004M3	4	M3	9,5	3,0	17,35	15,00	8	50	4,53
T2004M5	4	M5	9,5	4,0	17,35	17,00	8	50	4,65
T200418	4	1/8	9,5	5,5	17,35	18,35	13	50	8,56
T200414	4	1/4	9,5	6,5	17,35	20,55	16	50	13,83
T200438	4	3/8	11,0	7,5	18,60	28,50	20	25	25,42
T2006M5	6	M5	9,5	4,0	21,10	17,00	8	50	5,71
T200618	6	1/8	11,5	5,5	21,10	18,50	13	50	9,48
T200614	6	1/4	11,5	6,5	21,10	20,55	16	50	14,94
T200638	6	3/8	13,0	7,5	19,60	29,50	20	25	28,36
T200612	6	1/2	13,0	9,0	19,60	32,00	24	10	39,55
T200818	8	1/8	13,5	5,5	23,10	20,00	13	50	10,64
T200814	8	1/4	13,5	6,5	23,10	20,55	16	50	14,28
T200838	8	3/8	13,5	7,5	23,10	25,00	18	25	21,66
T200812	8	1/2	15,7	10,0	22,80	34,50	24	10	38,99
T201018	10	1/8	18,4	5,5	28,50	34,50	17	25	38,40
T201014	10	1/4	17,0	6,5	27,30	23,35	16	25	42,85
T201038	10	3/8	18,4	7,5	28,50	37,00	20	25	20,74
T201012	10	1/2	18,4	10,0	28,50	40,50	24	10	225,40
T201218	12	1/8	21,0	5,5	29,40	36,00	21	10	49,05
T201214	12	1/4	21,0	7,5	29,40	38,50	21	10	47,68
T201238	12	3/8	21,0	7,5	29,40	38,50	21	10	49,46
T201212	12	1/2	21,0	10,0	29,40	41,50	24	10	54,72

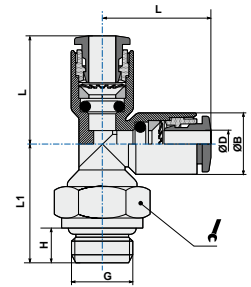


ART. **T21**

Swivel male branch T (parallel)



COD.	ØD	G	ØB	H	L	L1			
T2104M3	4	M3	9,5	3,0	17,35	14,80	8	50	4,52
T2104M5	4	M5	9,5	4,0	17,35	15,80	8	50	4,74
T210418	4	1/8	9,5	5,5	17,35	18,35	13	50	8,50
T210414	4	1/4	9,5	6,5	17,35	20,55	16	50	13,96
T210438	4	3/8	11,0	7,5	18,60	28,50	20	25	25,42
T210618	6	1/8	11,5	5,5	21,10	18,35	13	50	9,71
T210614	6	1/4	11,5	6,5	21,10	20,55	16	50	14,85
T210638	6	3/8	13,0	7,5	19,60	29,50	20	25	27,71
T210612	6	1/2	13,0	10,0	19,60	32,00	24	10	36,70
T210818	8	1/8	13,5	5,5	20,65	23,00	13	50	10,58
T210814	8	1/4	13,5	6,5	23,00	20,55	16	50	13,97
T210838	8	3/8	13,5	7,5	23,00	25,00	18	25	21,60
T210812	8	1/2	14,5	10,0	22,80	34,50	24	10	38,56
T211018	10	1/8	18,4	5,5	28,50	34,50	17	25	35,67
T211014	10	1/4	18,4	7,5	28,50	37,00	17	25	36,23
T211038	10	3/8	18,4	7,5	28,50	37,00	20	25	40,82
T211012	10	1/2	18,4	10,0	28,50	40,50	24	10	51,01
T211218	12	1/8	21,0	5,5	29,40	38,50	21	25	49,78
T211214	12	1/4	21,0	7,5	29,40	38,50	21	10	48,31
T211238	12	3/8	21,0	7,5	29,40	38,50	21	10	51,21
T211212	12	1/2	21,0	10,0	29,40	41,50	24	10	55,38

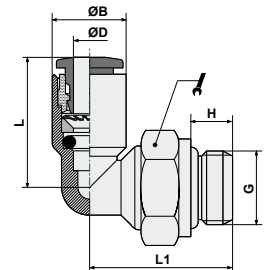


ART. **T22**

Swivel elbow male adaptor (parallel)



COD.	ØD	G	ØB	H	L	L1			
T2204M3	4	M3	9,5	3	17,35	14,80	8	50	3,64
T2204M5	4	M5	9,5	4	17,35	15,80	8	100	3,80
T220418	4	1/8	9,5	5,5	17,35	18,35	13	100	7,77
T220414	4	1/4	9,5	6,5	17,35	20,55	16	100	13,12
T2206M5	6	M5	11,5	4,0	21,10	16,10	8	100	4,31
T220618	6	1/8	11,5	5,5	21,10	18,35	13	100	8,11
T220614	6	1/4	11,5	6,5	21,10	20,55	16	100	13,82
T220818	8	1/8	13,5	5,5	23,10	20,65	13	100	8,93
T220814	8	1/4	13,5	6,5	23,10	20,55	16	50	12,39
T220838	8	3/8	13,5	7,5	23,10	25,20	18	50	19,93
T220812	8	1/2	15,0	10,0	24,00	25,50	24	25	37,70
T221014	10	1/4	17,0	6,5	26,70	23,35	16	50	14,40
T221038	10	3/8	17,0	7,5	26,70	25,00	18	50	17,63
T221012	10	1/2	17,0	9,0	26,70	29,30	21	25	29,73
T221214	12	1/4	20,0	6,5	28,90	24,35	16	25	17,14
T221238	12	3/8	20,0	7,5	28,90	26,50	18	25	20,51
T221212	12	1/2	20,0	9,0	28,90	29,30	21	25	28,32
T221638	16	3/8	26,5	7,5	33,00	42,50	24	10	66,02
T221612	16	1/2	26,5	10,0	33,00	44,50	24	10	60,38

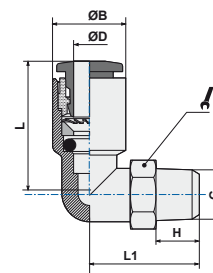


ART. **T22C**

Swivel elbow male adaptor tapered



COD.	ØD	G	ØB	H	L	L1			
T22C0418	4	1/8	11,0	7,5	19,0	20,5	10	100	6,67
T22C0414	4	1/4	11,0	9,5	19,0	20,0	14	100	12,46
T22C0438	4	3/8	11,0	10,5	19,0	21,0	17	25	19,82
T22C0618	6	1/8	13,0	7,5	19,8	21,5	10	100	7,34
T22C0614	6	1/4	13,0	9,5	19,8	21,0	14	100	13,02
T22C0638	6	3/8	13,0	10,5	19,8	22,0	17	25	20,04
T22C0612	6	1/2	13,0	13,5	19,8	25,5	21	10	34,22
T22C0818	8	1/8	14,5	7,5	23,7	22,3	10	100	8,27
T22C0814	8	1/4	14,5	9,5	23,7	21,8	14	100	13,94
T22C0838	8	3/8	14,5	10,5	23,7	22,8	17	50	21,49
T22C0812	8	1/2	14,5	13,5	23,7	26,3	21	10	35,12
T22C1018	10	1/8	18,4	7,5	27,8	26,9	14	50	16,55
T22C1014	10	1/4	18,4	9,5	27,8	28,4	14	50	18,45
T22C1038	10	3/8	18,4	10,5	27,8	24,7	17	50	22,21
T22C1012	10	1/2	19,0	13,5	27,8	28,2	21	25	35,70
T22C1218	12	1/8	21,0	7,5	29,5	28,2	15	25	20,55
T22C1214	12	1/4	21,0	9,5	29,5	29,7	15	25	22,32
T22C1238	12	3/8	21,0	10,5	29,5	26,0	17	50	24,18
T22C1212	12	1/2	21,0	13,5	29,5	29,5	21	25	35,40

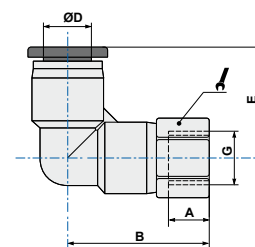


ART. **T22F**

Female swivel elbow adaptor



COD.	ØD	G	A	B	E			
T22F04M5	4	M5	5,5	20,5	19,0	10	50	9,17
T22F0418	4	1/8	8,5	24,0	19,0	14	50	14,80
T22F0414	4	1/4	11,0	27,0	19,0	17	50	20,24
T22F06M5	6	M5	6,0	20,7	19,2	12	50	13,27
T22F0618	6	1/8	8,5	24,2	19,2	14	50	16,85
T22F0614	6	1/4	11,0	27,2	19,2	17	50	21,91
T22F0638	6	3/8	12,0	28,7	19,2	21	25	26,37
T22F0818	8	1/8	8,0	27,0	23,0	14	50	19,27
T22F0814	8	1/4	11,0	30,5	23,0	17	50	23,47
T22F0838	8	3/8	12,0	32,0	23,0	21	25	32,70
T22F1014	10	1/4	11,0	34,3	28,2	17	25	34,59
T22F1038	10	3/8	12,0	35,8	28,2	21	25	38,84
T22F1012	10	1/2	14,0	38,8	28,2	24	10	47,77
T22F1214	12	1/4	11,0	37,0	29,5	21	25	57,88
T22F1238	12	3/8	12,0	38,0	29,5	21	25	45,98
T22F1212	12	1/2	14,0	40,5	29,5	24	10	52,68

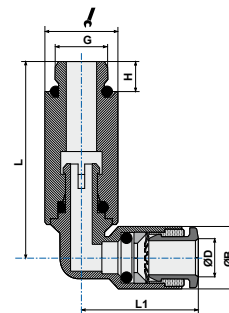


ART. **T22L**

Swivel longer elbow male adaptor (parallel)



COD.	ØD	G	ØB	H	L	L1			
T22L04M5	4	M5	11,0	3,5	34,5	18,6	10	25	18,44
T22L0418	4	1/8	9,5	5,5	35,9	17,4	13	25	23,78
T22L06M5	6	M5	13,0	3,5	37,2	19,6	12	25	24,07
T22L0618	6	1/8	11,5	5,5	35,9	20,8	13	25	24,21
T22L0818	8	1/8	13,5	5,5	38,2	23,1	13	25	25,17
T22L0814	8	1/4	14,5	7,5	46,8	22,8	17	25	46,55

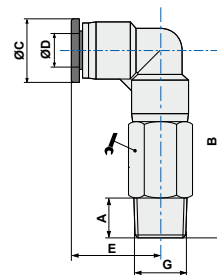


ART. **T22LC**

Swivel longer elbow male adaptor (parallel)



COD.	ØD	G	A	B	ØC	E			
T22LC0418	4	1/8	7,5	37,0	11,0	18,6	10	25	14,74
T22LC0414	4	1/4	9,5	40,0	11,0	18,6	14	25	19,89
T22LC0618	6	1/8	7,5	40,5	13,0	19,6	12	25	22,41
T22LC0614	6	1/4	9,5	43,0	13,0	19,6	14	25	24,74
T22LC0638	6	3/8	10,5	44,5	13,0	19,6	17	25	31,65
T22LC0818	8	1/8	7,5	44,8	14,5	22,8	14	25	34,35
T22LC0814	8	1/4	9,5	46,8	14,5	22,8	14	25	32,40
T22LC0838	8	3/8	10,5	48,3	14,5	22,8	17	25	41,71
T22LC1018	10	1/8	7,5	55,0	18,5	28,5	17	25	35,12
T22LC1014	10	1/4	9,5	57,0	18,5	28,5	17	25	65,78
T22LC1038	10	3/8	10,5	58,0	18,5	28,5	17	25	55,75
T22LC1012	10	1/2	13,5	61,5	18,5	28,5	21	10	57,90
T22LC1214	12	1/4	9,5	61,5	21,0	29,5	21	10	105,46
T22LC1238	12	3/8	10,5	62,5	21,0	29,5	21	10	100,28
T22LC1212	12	1/2	13,5	65,5	21,0	29,5	21	10	92,26

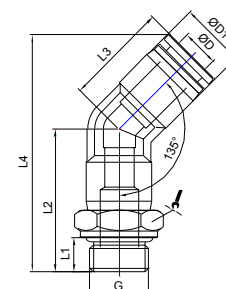


ART. **T45**

Swivel 45° elbow male adaptor (parallel)



COD.	ØD	G	L1	L2	L3	L4	ØD1			
T4504M5	4	M5	3,5	22,5	19,0	39,5	11,3	10	1	8,37
T450418	4	G1/8	5,5	25,5	19	42,5	11,3	14	1	13,10
T450618	6	G1/8	5,5	25,5	19,2	43,5	13,3	14	1	14,16
T450614	6	G1/4	7,5	28	19,2	46	13,3	17	1	19,81
T450818	8	G1/8	5,5	29	22,5	49,5	14,8	14	1	17,60
T450814	8	G1/4	7,5	31,5	22,5	52	14,8	17	1	21,83
T451014	10	G1/4	7,5	36	27,8	62,5	18,7	17	1	30,80
T451038	10	G3/8	7,5	36	27,8	62,5	18,7	20	1	35,27

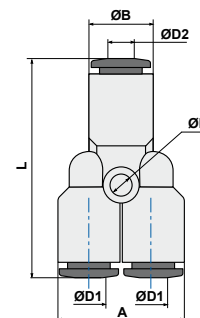


ART. **T23**

Y connector



COD.	ØD1	ØD2	ØE	ØB	A	L		
T230400	4	4	3,2	9,5	19,0	33,3	50	2,98
T230406	4	6	3,2	11,5	19,0	36,2	50	3,56
T230600	6	6	3,2	11,5	23,0	39,2	50	4,83
T230608	6	8	3,2	13,5	23,0	42,7	50	5,26
T230800	8	8	3,2	13,5	27,0	42,7	50	6,29
T230810	8	10	3,2	17,0	27,0	49,0	25	7,84
T231000	10	10	4,3	17,0	34,0	49,4	25	11,16
T231012	10	12	4,3	20,0	34,0	50,8	10	14,12
T231200	12	12	4,2	20,0	40,0	53,2	10	16,73
T231600	16	16	4,2	26,0	51,5	58,5	10	41,27

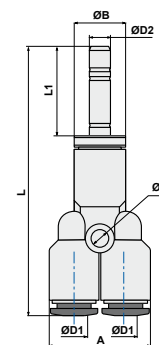


ART. **T23L0**

Plug-in Y connector



COD.	ØD1	ØD2	ØB	A	ØE	L	L1		
T2304L0	4	4	9,5	19	3,2	50,0	16,7	50	6,69
T2306L0	6	6	11,5	23	3,2	57,6	19,5	50	11,19
T2308L0	8	8	13,5	27	3,2	62,6	21,0	50	15,24
T2310L0	10	10	17,0	34	4,3	72,3	24,0	25	24,64
T2312L0	12	12	20,0	40	4,2	77,1	25,0	10	33,95

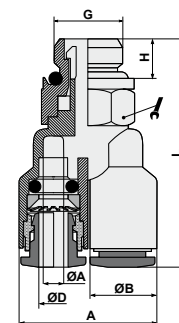


ART. **T23G**

Y connector with swivel parallel male adapter



COD.	ØD	G	ØA	ØB	H	A	L			
T23G04M5	4	M5	2,0	11,0	3,5	22,0	39,8	10	50	11,09
T23G0418	4	1/8	3,0	9,5	5,5	19,0	31,8	13	50	8,57
T23G0414	4	1/4	3,0	9,5	6,5	19,0	32,8	16	50	21,04
T23G0438	4	3/8	3,0	11,0	7,5	22,0	46,0	20	25	26,95
T23G0618	6	1/8	5,0	11,5	5,5	23,0	35,3	13	50	9,66
T23G0614	6	1/4	5,0	11,5	6,5	23,0	36,8	16	50	15,12
T23G0638	6	3/8	5,0	13,0	7,5	26,0	46,8	20	25	29,25
T23G0818	8	1/8	7,0	13,5	5,5	27,0	37,8	13	50	10,71
T23G0814	8	1/4	7,0	13,5	6,5	27,0	38,8	16	50	14,38
T23G0838	8	3/8	6,2	14,5	7,5	29,0	49,9	20	25	31,11
T23G1014	10	1/4	8,2	18,4	7,5	36,4	58,5	17	25	38,11
T23G1038	10	3/8	8,2	18,4	7,5	36,4	58,5	20	25	41,81
T23G1012	10	1/2	8,2	18,4	10,0	36,4	62,0	24	10	52,32
T23G1214	12	1/4	9,5	21,0	7,5	42,0	62,0	21	10	57,62
T23G1238	12	3/8	9,5	21,0	7,5	42,0	62,0	21	10	52,03
T23G1212	12	1/2	9,5	21,0	10,0	42,0	65,0	24	10	58,58

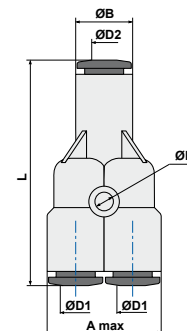


ART. **T24**

Double Y connector



COD.	ØD1	ØD2	ØE	ØB	A max	L		
T240400	4	4	3,2	9,5	20,0	34,8	25	5,97
T240406	4	6	3,2	11,5	20,0	37,3	25	6,39
T240408	4	8	3,2	14,5	22,0	38,4	25	12,89
T240600	6	6	3,2	11,5	24,0	40,2	25	9,02
T240608	6	8	3,2	14,5	26,0	39,9	25	16,81
T240800	8	8	3,2	14,5	29,5	41,6	25	20,07
T240810	8	10	3,2	17,0	28,0	46,8	25	13,99

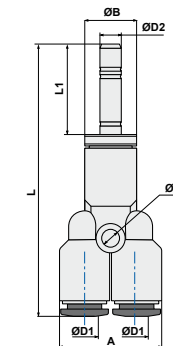


ART. **T24L0**

Plug-in double Y connector



COD.	ØD1	ØD2	ØE	ØB	A	L	L1		
T2404L0	4	4	3,2	9,5	19	50,3	16,7	25	9,56
T2406L0	6	6	3,2	11,5	24	59,0	19,5	25	14,15
T2408L0	8	8	3,2	13,5	28	64,0	21,0	25	24,65

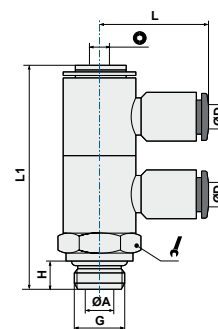


ART. **T33**

Swivel double banjo stem



COD.	ØD	G	ØA	H	L1	L				
T3304M5	4	M5	2,0	4,0	28,0	19,7	2,5	14	25	5,88
T330418	4	1/8	5,5	5,5	43,3	21,3	3	14	25	22,33
T330618	6	1/8	5,5	5,5	43,3	24,6	3	14	25	23,17
T330614	6	1/4	7,8	6,5	50,0	25,8	4	18	25	42,26
T330818	8	1/8	5,5	5,5	43,3	24,9	3	14	25	23,66
T330814	8	1/4	7,8	6,5	50,0	26,6	4	18	25	44,98
T331014	10	1/4	7,8	6,5	50,0	28,7	4	18	25	45,86

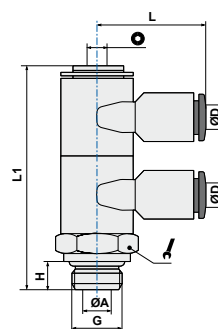


ART. **T33B**

Double banjo universal male



COD.	ØD	G	ØA	H	L1	L				
T33B04M5	4	M5	2,0	4,0	28,0	19,7	2,5	14	10	7,90
T33B0618	6	1/8	5,5	5,5	43,3	24,6	3	14	10	19,88
T33B0814	8	1/4	7,8	6,5	50,0	26,6	4	18	10	48,50

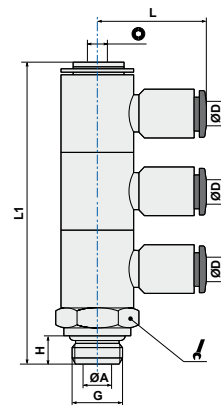


ART. **T34**

Swivel triple banjo stem



COD.	ØD	G	ØA	H	L1	L	⊙	🔧	📦	📊
T340418	4	1/8	5,5	5,5	58,4	21,3	3	14	10	28,50
T340618	6	1/8	5,5	5,5	58,4	24,6	3	14	10	30,06
T340818	8	1/8	5,5	5,5	58,4	24,9	3	14	10	56,19
T340614	6	1/4	7,8	6,5	67,1	25,8	4	18	10	30,58
T340814	8	1/4	7,8	6,5	67,1	26,6	4	18	10	56,63
T341014	10	1/4	7,8	6,5	67,1	28,7	4	18	10	60,71

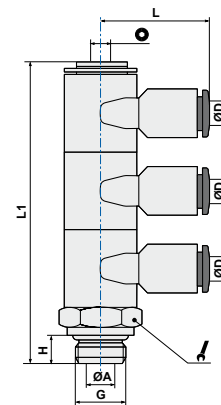


ART. **T34B**

Triple banjo universal male elbow



COD.	ØD	G	ØA	H	L1	L	⊙	🔧	📦	📊
T34B0618	6	1/8	5,5	5,5	58,4	24,6	3	14	10	34,58
T34B0814	8	1/4	7,8	6,5	67,1	26,6	4	18	10	62,84

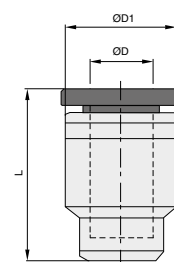


ART. **T90**

Tube blanking cap



COD.	ØD	ØD1	L	📦	📊
T900400	4	11,5	17,5	100	1,97
T900600	6	13,5	17,7	100	2,56
T900800	8	15	21,3	100	3,37
T901000	10	19	25,0	50	6,84
T901200	12	21,5	26,0	50	8,59

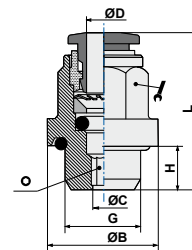


ART. **TB01**

Straight male adaptor (parallel)



COD.	ØD	G	ØC	ØB	H	L	Ø			
TB010418	4	1/8	2,5	14,0	5,5	19,65	10	2,5	50	2,16
TB010414	4	1/4	2,5	17,5	6,5	21,15	10	2,5	50	3,36
TB010618	6	1/8	4,0	14,0	5,5	25,10	12	4,0	50	3,10
TB010614	6	1/4	4,0	17,5	6,5	26,60	12	4,0	50	4,26
TB010818	8	1/8	5,0	14,0	5,5	26,10	14	5,0	50	3,53
TB010814	8	1/4	6,0	17,5	6,5	27,60	14	6,0	50	4,58
TB011014	10	1/4	7,0	17,5	6,5	29,20	18	7,0	50	6,33

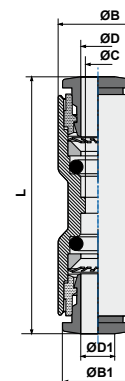


ART. **TB03**

Straight connector



COD.	ØD	ØD1	ØC	ØB	ØB1	L		
TB030400	4	4	3	9,5	9,5	32,30	50	1,96
TB030406	4	6	3	9,5	11,5	34,25	50	2,39
TB030600	6	6	5	11,5	11,5	36,70	50	3,00
TB030608	6	8	5	11,5	13,5	37,70	50	3,27
TB030800	8	8	7	13,5	13,5	38,20	50	3,53
TB030810	8	10	7	13,5	17,0	40,75	50	5,03
TB031000	10	10	9	17,0	17,0	42,90	50	6,04
TB031012	10	12	9	17,0	20,0	44,50	50	5,04
TB031200	12	12	10	20,0	20,0	46,20	25	9,06

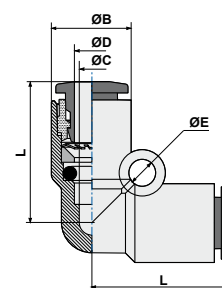


ART. **TB04**

Elbow connector



COD.	ØD	ØC	ØB	L	ØE		
TB040400	4	3	9,5	17,35	3,20	50	2,21
TB040600	6	5	11,5	21,10	3,20	50	3,28
TB040800	8	7	13,5	23,10	3,20	50	4,14
TB041000	12	10	20,0	28,90	4,20	25	10,98
TB041200	12	10	20,0	28,90	4,20	25	10,98

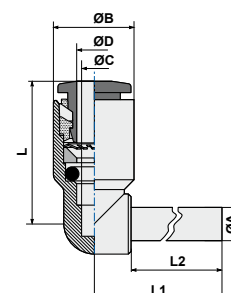


ART. **TB04LO**

Plug-in elbow connector



COD.	ØD	ØC	ØB	L	L1	ØA	L2		
TB0404LO	4	3	9,5	17,35	20,75	4	16,7	50	1,39
TB0406LO	6	5	11,5	21,10	24,25	6	19,5	50	2,18
TB0408LO	8	7	13,5	23,10	27,25	8	21,0	50	2,96
TB0410LO	10	9	17,0	26,70	31,80	10	24,0	50	5,07
TB0412LO	12	10	20,0	28,90	36,00	12	25,0	25	8,00

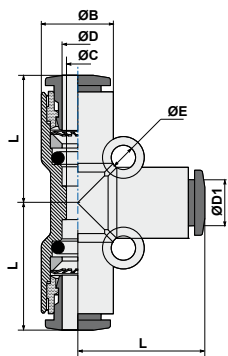


ART. **TB05**

T connector



COD.	ØD	ØD1	ØC	ØB	L	ØE		
TB050400	4	4	3,0	9,50	17,35	3,2	50	3,16
TB050604	6	4	5,3	13,00	19,10	3,2	50	8,20
TB050600	6	6	5,0	11,50	21,10	3,2	50	4,72
TB050806	8	6	7,1	14,40	22,70	3,2	25	11,07
TB050800	8	8	7,0	13,50	23,10	3,2	50	5,96
TB051008	10	8	9,3	18,40	27,90	4,2	25	21,85
TB051000	10	10	9,0	17,00	26,70	4,3	25	10,70
TB051210	12	10	10,0	21,00	29,90	4,2	10	26,78
TB051200	12	12	10,0	20,00	28,90	4,2	10	26,78

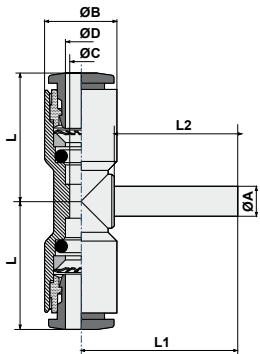


ART. **TB05LO**

Plug-in T connector (center)



COD.	ØD	ØC	ØB	L	L1	ØA	L2		
TB0504L0	4	3	9,5	17,2	20,8	4	16,7	50	2,26
TB0506L0	6	5	11,5	20,8	24,3	6	19,5	50	3,51
TB0508L0	8	7	13,5	23,0	27,3	8	21,0	50	4,66
TB0510L0	10	9	17,0	26,4	31,8	10	24,0	25	5,64
TB0512L0	12	10	20,0	28,9	36,0	12	25,0	10	7,11

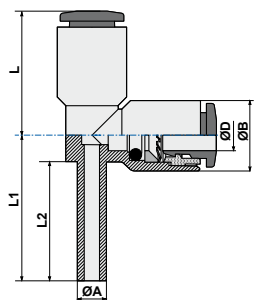


ART. **TB05V0**

Plug-in T connector (lateral)



COD.	ØD	ØB	L	L1	ØA	L2		
TB0506V0	6	11,5	20,8	24,3	6	19,5	50	3,42
TB0508V0	8	13,5	23,0	27,3	8	21,0	50	4,54
TB0510V0	10	17,0	26,4	31,8	10	24,0	25	7,65
TB0512V0	12	20,0	28,9	36,0	12	25,0	10	8,10

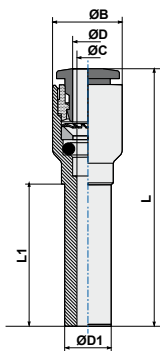


ART. **TB08**

Reducer



COD.	ØD1	ØD	ØC	ØB	L	L1		
TB080604	6	4	3	9,5	35,65	19,50	50	1,37
TB080804	8	4	3	9,5	37,15	21,00	50	1,60
TB081004	10	4	3	9,5	40,15	24,00	25	1,97
TB081204	12	4	3	9,5	41,15	25,00	25	2,22
TB080806	8	6	5	11,5	39,35	23,00	50	2,10
TB081006	10	6	5	11,5	42,35	24,00	25	2,49
TB081206	12	6	5	11,5	43,35	25,00	25	2,80
TB081008	10	8	7	13,5	43,10	26,25	25	2,74
TB081208	12	8	7	13,5	44,10	25,00	25	3,00
TB081210	12	10	9	17,0	46,45	27,55	25	4,40

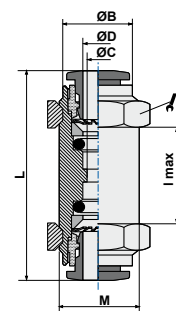


ART. **TB10**

Bulkhead connector



COD.	ØD	ØB	ØC	L	M	Lmax			
TB100400	4	9,5	3	32,0	11x1	8	14	50	7,78
TB100600	6	11,5	5	36,1	14,1	12	17	50	11,05
TB100800	8	13,5	7	38,0	16x1	15	18	50	10,93
TB101000	10	17,5	9	42,3	20x1	17	24	25	25,34
TB101200	12	20	10	46,2	22x1	20	26	25	33,12

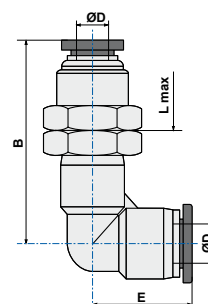


ART. **TB10L**

L bulkhead



COD.	ØD	M	B	E	H	Lmax			
TB10L0400	4	12x1	28,5	19,0	14,0	6,0	14	25	17,77
TB10L0600	6	14x1	32,1	19,2	17,0	7,0	17	25	28,99
TB10L0800	8	16x1	39,4	23,0	19,0	7,5	19	25	39,23
TB10L1000	10	20x1	48,8	28,2	24,0	9,5	24	25	63,06
TB10L1200	12	22x1	49,5	29,5	27,0	10,0	26	10	79,66

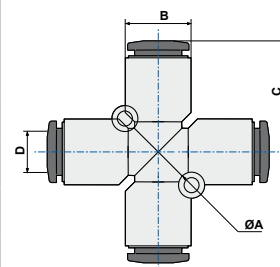


ART. **TB11**

Cross connector



COD.	ØD	ØB	C	ØA		
TB110400	4	9,5	17,4	3,2	25	4,02
TB110600	6	11,5	21,1	3,2	25	6,20
TB110800	8	13,5	23,1	3,2	25	7,79
TB111000	10	17,0	26,7	4,2	10	14,06
TB111200	12	21,0	29,5	4,3	10	34,38

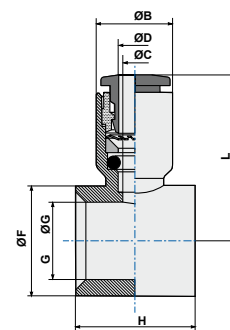


ART. **TB13**

Single banjo body



COD.	ØD	G*	ØC	ØB	ØG	H	L	ØF		
TB1304M5	4	M5	3	9,5	5,00	10	19,65	8,0	50	1,33
TB130418	4	1/8	3	9,5	9,90	15	21,25	14,0	50	2,37
TB130618	6	1/8	5	11,5	9,90	15	24,60	14,0	50	2,85
TB130614	6	1/4	5	11,5	13,30	17	25,80	18,0	50	3,77
TB130818	8	1/8	7	13,5	9,90	15	24,90	14,0	50	3,09
TB130814	8	1/4	7	13,5	13,30	17	26,60	18,0	50	3,95
TB130838	8	3/8	7	13,5	16,75	20	28,10	21,3	50	4,89
TB131014	10	1/4	9	17,0	13,30	17	28,70	18,0	50	5,36
TB131038	10	3/8	9	17,0	16,75	20	30,20	21,3	25	6,22
TB131012	10	1/2	9	17,0	13,30	24	33,20	26,0	25	6,78
TB131238	12	3/8	10	20,0	16,75	20	31,40	21,3	25	7,51
TB131212	12	1/2	10	20,0	21,00	24	34,90	26,0	25	9,53
TB13R04M5	4	M5	3	9,5	6,00	10	19,90	9,0	50	1,76
TB13R06M5	6	M5	5	11,5	6,00	10	22,10	9,0	50	1,26

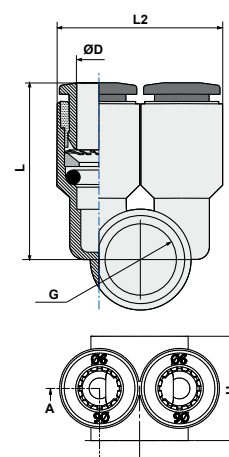


G* = Stem thread. See page 94 of stem section.

ART. TB13B
Single branch body

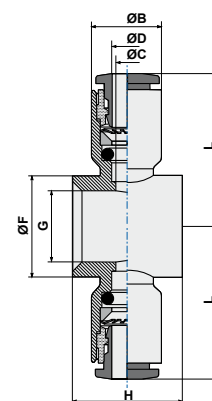

COD.	ØD	G*	H	L	L2		
TB13B04M5	4	M5	10	19,7	19	50	2,39
TB13B0618	6	1/8	15	24,6	23	50	4,40
TB13B0814	8	1/4	17	26,6	27	50	6,06
TB13B1038	10	3/8	20	30,2	34	25	9,88
TB13B1212	12	1/2	24	34,9	40	10	15,36

G* = Stem thread. See page 95 of stem section.
 H = Stem size lenght

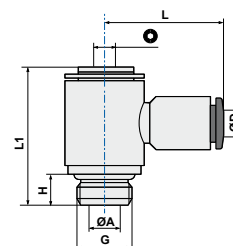

ART. TB14
Double banjo body


COD.	ØD	G*	ØC	ØB	H	ØF	L		
TB1404M5	4	M5	3	9,5	10	8,00	19,5	50	2,24
TB140418	4	1/8	3	9,5	15	14,00	21,1	50	3,33
TB140618	6	1/8	5	11,5	15	14,00	24,3	50	5,10
TB140838	8	3/8	7	13,5	20	21,30	28,0	25	6,48
TB141038	10	3/8	9	17,0	20	21,30	29,9	25	8,89
TB141012	10	1/2	9	17,0	24	26,00	30,0	10	11,19
TB141238	12	3/8	10	20,0	20	21,30	31,4	25	11,57
TB141212	12	1/2	10	20,0	24	26,00	34,9	10	14,21

G* = Stem thread. See page 95 of stem section.


ART. TB15
Complete single banjo (rotating under pressure)


COD.	ØD	G	ØA	H	L1	L			
TB1504M5	4	M5	2,0	4,0	17,8	19,65	2,5	50	3,54
TB1504M6	4	M6	2,0	5,0	18,8	19,65	2,5	50	3,96
TB150418	4	1/8	5,5	5,5	24,5	21,25	3,0	50	11,87
TB150618	6	1/8	5,5	5,5	24,5	24,60	3,0	50	12,29
TB150614	6	1/4	7,8	6,5	27,8	25,80	4,0	50	22,36
TB150818	8	1/8	5,5	5,5	24,5	24,90	3,0	50	12,67
TB150814	8	1/4	7,8	6,5	27,8	26,60	4,0	50	21,89
TB150838	8	3/8	10,0	7,5	32,5	28,10	5,0	25	37,40
TB151014	10	1/4	7,8	6,5	27,8	28,70	4,0	25	23,86
TB151038	10	3/8	10,0	7,5	32,5	30,20	5,0	25	38,54
TB151012	10	1/2	12,0	9,0	38,8	33,20	8,0	10	37,55
TB151238	12	3/8	10,0	7,5	32,5	31,40	5,0	10	39,91
TB151212	12	1/2	12,0	9,0	38,8	34,90	8,0	10	44,50

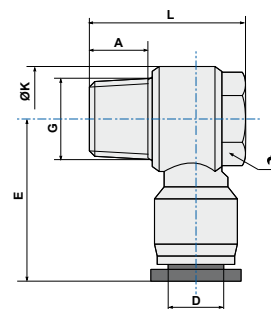


ART. **TB15C**

Complete single banjo tapered



COD.	ØD	G	A	L	ØK	E			
TB15C0418	4	1/8	7,5	23,5	14,4	22,40	12,0	50	12,22
TB15C0618	6	1/8	7,5	23,5	14,4	22,90	12,0	50	12,95
TB15C0614	6	1/4	9,5	26,5	18,3	25,00	14,0	50	21,03
TB15C0638	6	3/8	10,5	32,0	22,0	26,60	19,0	25	37,28
TB15C0818	8	1/8	7,5	23,5	14,4	25,60	12,0	50	13,66
TB15C0814	8	1/4	9,5	26,5	18,3	28,70	14,0	50	21,84
TB15C0838	8	3/8	10,5	32,0	22,0	29,60	19,0	25	37,98
TB15C1014	10	1/4	9,5	26,5	18,3	32,60	14,0	25	25,63
TB15C1038	10	3/8	10,5	32,0	22,0	33,10	19,0	25	41,63
TB15C1012	10	1/2	13,5	38,5	28,0	36,10	24,0	10	65,27
TB15C1238	12	3/8	10,5	32,0	22,0	35,40	19,0	10	43,92
TB15C1212	12	1/2	13,5	38,5	28,0	36,40	24,0	10	67,49

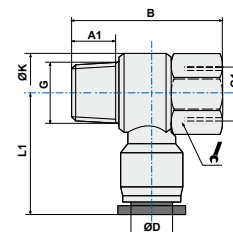


ART. **TB15FC**

Female complete single banjo tapered



COD.	ØD	G/G1	L1	A1	B	ØK			
TB15FC0418	4	1/8	22,4	7,5	29,0	14,40	14,0	50	16,26
TB15FC0414	4	1/4	25,0	9,5	35,0	18,30	17,0	50	29,78
TB15FC0618	6	1/8	22,9	7,5	29,0	14,40	14,0	50	16,81
TB15FC0614	6	1/4	25,0	9,5	35,0	18,30	17,0	50	29,62
TB15FC0818	8	1/8	25,6	7,5	29,0	14,40	14,0	50	17,68
TB15FC0814	8	1/4	28,7	9,5	35,0	18,30	17,0	50	30,66
TB15FC0838	8	3/8	29,6	10,5	40,0	22,00	21,0	25	46,70
TB15FC1014	10	1/4	32,6	9,5	35,0	18,30	17,0	25	33,97
TB15FC1038	10	3/8	33,1	10,5	40,0	22,00	21,0	25	49,53
TB15FC1012	10	1/2	36,1	13,5	47,5	28,00	24,0	10	67,13
TB15FC1238	12	3/8	35,4	10,5	40,0	22,00	21,0	10	51,20
TB15FC1212	12	1/2	36,4	13,5	47,5	28,00	24,0	10	69,13

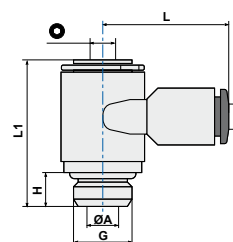


ART. **TB15B**

Single banjo universal male elbow



COD.	ØD	G	ØA	H	L1	L				
TB15B04M5	4	M5	2,0	4,0	17,8	19,7	2,5	2,5	50	4,57
TB15B0618	6	1/8	5,5	5,5	24,5	24,6	3,0	3,0	50	13,73
TB15B0814	8	1/4	7,8	6,5	27,8	26,6	4,0	4,0	50	24,51
TB15B1038	10	3/8	10,0	7,5	32,5	30,2	5,0	5,0	25	44,78
TB15B1212	12	1/2	12,0	9,0	38,8	34,9	8,0	8,0	10	77,84

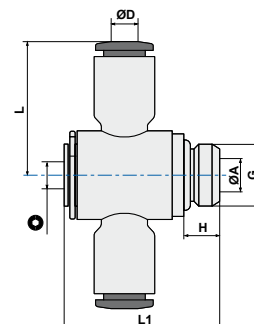


ART. **TB16**

Complete double banjo (rotating under pressure)



COD.	ØD	G*	ØA	H	L1	L	⊙		
TB1604M5	4	M5	2	4,0	17,8	19,5	2,5	50	4,48
TB160418	4	1/8	5,5	5,5	24,5	21,1	3,0	50	55,00
TB160618	6	1/8	5,5	5,5	24,5	24,3	3,0	50	38,55
TB160838	8	3/8	7,5	7,5	32,5	28,0	5,0	25	67,55
TB161038	10	3/8	7,5	7,5	32,5	30,0	5,0	25	48,90
TB161012	10	1/2	9,0	9,0	38,8	30,0	8,0	10	48,65
TB161238	12	3/8	7,5	7,5	32,5	31,5	5,0	25	44,10
TB161212	12	1/2	9,0	9,0	38,8	35,0	8,0	10	51,16

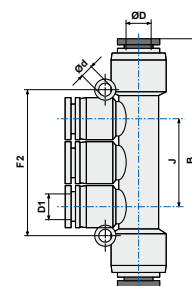


ART. **TB18**

Triple branch union



COD.	ØD	ØD1	J	B	Ød	F2		
TB180604	6	4	26,0	60,3	3,2	42,0	25	16,05
TB180804	8	4	26,0	61,7	3,2	42,0	25	15,89
TB180806	8	6	26,0	61,7	3,2	42,0	25	15,66
TB181006	10	6	29,2	83,0	4,2	48,0	10	27,15
TB181008	10	8	29,2	83,0	4,2	48,0	10	27,50

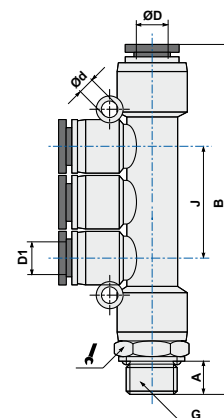


ART. **TB18G**

Male triple branch



COD.	ØD	D1	G	A	B	J		Ød		
TB18G0418	4	4	1/8	5,5	67,2	26	14	3,2	25	25,26
TB18G0414	4	4	1/4	7,5	69,7	26	17	3,2	25	31,01
TB18G0438	4	4	3/8	7,5	69,7	26	20	3,2	10	152,50
TB18G0618	6	6	1/8	5,5	67,2	26	14	3,2	25	25,51
TB18G0614	6	6	1/4	7,5	69,7	26	17	3,2	25	30,52
TB18G0638	6	6	3/8	7,5	70,2	26	20	3,2	10	157,40
TB18G0612	6	6	1/2	9	72,7	26	24	3,2	10	207,40
TB18G0818	8	8	1/8	5,5	87,8	29	14	3,2	10	37,54
TB18G0814	8	8	1/4	7,5	90,3	29	17	3,2	10	41,48
TB18G0838	8	8	3/8	7,5	90,8	29	20	3,2	10	47,77
TB18G0812	8	8	1/2	9,0	93,3	29	24	3,2	10	259,20
TB18G1018	10	10	1/8	5,5	99,0	37	14	4,2	10	235,00
TB18G1014	10	10	1/4	7,5	101,5	37	17	4,2	10	58,26
TB18G1038	10	10	3/8	7,5	101,5	37	20	4,2	10	58,09
TB18G1012	10	10	1/2	9	105,0	37	24	4,2	10	293,00

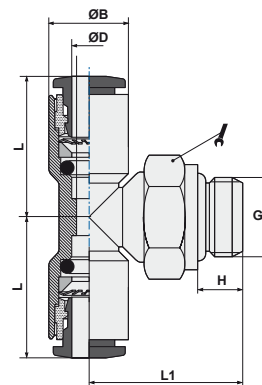


ART. **TB20**

Swivel male stud T parallel



COD.	ØD	G	ØB	H	L	L1			
TB2004M3	4	M3	9,5	3,0	17,35	15,00	8	50	4,53
TB2004M5	4	M5	9,5	4,0	17,35	17,00	8	50	4,65
TB200418	4	1/8	9,5	5,5	17,35	18,35	13	50	8,56
TB200414	4	1/4	9,5	6,5	17,35	20,55	16	50	13,83
TB200438	4	3/8	11,0	7,5	18,60	28,50	20	25	25,42
TB2006M5	6	M5	9,5	4,0	21,10	17,00	8	50	5,71
TB200618	6	1/8	11,5	5,5	21,10	18,50	13	50	9,48
TB200614	6	1/4	11,5	6,5	21,10	20,55	16	50	14,94
TB200638	6	3/8	13,0	7,5	19,60	29,50	20	25	28,36
TB200612	6	1/2	13,0	9,0	19,60	32,00	24	10	39,55
TB200818	8	1/8	13,5	5,5	23,10	20,00	13	50	10,64
TB200814	8	1/4	13,5	6,5	23,10	20,55	16	50	14,28
TB200838	8	3/8	13,5	7,5	23,10	25,00	18	25	21,66
TB200812	8	1/2	15,7	10,0	22,80	34,50	24	10	38,99
TB201018	10	1/8	18,4	5,5	28,50	34,50	17	25	38,40
TB201014	10	1/4	17,0	6,5	27,30	23,35	16	25	42,85
TB201038	10	3/8	18,4	7,5	28,50	37,00	20	25	20,74
TB201012	10	1/2	18,4	10,0	28,50	40,50	24	10	225,40
TB201218	12	1/8	21,0	5,5	29,40	36,00	21	10	49,05
TB201214	12	1/4	21,0	7,5	29,40	38,50	21	10	47,68
TB201238	12	3/8	21,0	7,5	29,40	38,50	21	10	49,46
TB201212	12	1/2	21,0	10,0	29,40	41,50	24	10	54,72

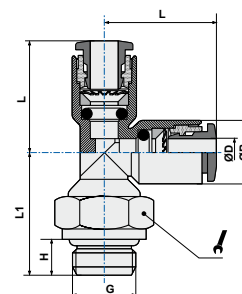


ART. **TB21**

Swivel male branch T parallel



COD.	ØD	G	ØB	H	L	L1			
TB2104M3	4	M3	9,5	3,0	17,35	14,80	8	50	4,52
TB2104M5	4	M5	9,5	4,0	17,35	15,80	8	50	4,74
TB210418	4	1/8	9,5	5,5	17,35	18,35	13	50	8,50
TB210414	4	1/4	9,5	6,5	17,35	20,55	16	50	13,96
TB210438	4	3/8	11,0	7,5	18,60	28,50	20	25	25,42
TB210618	6	1/8	11,5	5,5	21,10	18,35	13	50	9,71
TB210614	6	1/4	11,5	6,5	21,10	20,55	16	50	14,85
TB210638	6	3/8	13,0	7,5	19,60	29,50	20	25	27,71
TB210612	6	1/2	13,0	10,0	19,60	32,00	24	10	36,70
TB210818	8	1/8	13,5	5,5	20,65	23,00	13	50	10,58
TB210814	8	1/4	13,5	6,5	23,00	20,55	16	50	13,97
TB210838	8	3/8	13,5	7,5	23,00	25,00	18	25	21,60
TB210812	8	1/2	14,5	10,0	22,80	34,50	24	10	38,56
TB211018	10	1/8	18,4	5,5	28,50	34,50	17	25	35,67
TB211014	10	1/4	18,4	7,5	28,50	37,00	17	25	36,23
TB211038	10	3/8	18,4	7,5	28,50	37,00	20	25	40,82
TB211012	10	1/2	18,4	10,0	28,50	40,50	24	10	51,01
TB211218	12	1/8	21,0	5,5	29,40	38,50	21	25	49,78
TB211214	12	1/4	21,0	7,5	29,40	38,50	21	10	48,31
TB211238	12	3/8	21,0	7,5	29,40	38,50	21	10	51,21
TB211212	12	1/2	21,0	10,0	29,40	41,50	24	10	55,38

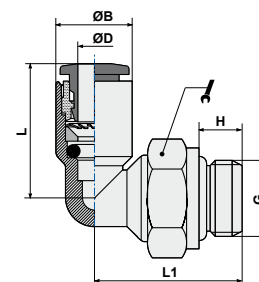


ART. **TB22**

Swivel elbow male adaptor parallel



COD.	ØD	G	ØB	H	L	L1			
TB2204M3	4	M3	9,5	3	17,35	14,80	8	50	3,64
TB2204M5	4	M5	9,5	4	17,35	15,80	8	100	3,80
TB220418	4	1/8	9,5	5,5	17,35	18,35	13	100	7,77
TB220414	4	1/4	9,5	6,5	17,35	20,55	16	100	13,12
TB2206M5	6	M5	11,5	4,0	21,10	16,10	8	100	4,31
TB220618	6	1/8	11,5	5,5	21,10	18,35	13	100	8,11
TB220614	6	1/4	11,5	6,5	21,10	20,55	16	100	13,82
TB220818	8	1/8	13,5	5,5	23,10	20,65	13	100	8,93
TB220814	8	1/4	13,5	6,5	23,10	20,55	16	50	12,39
TB220838	8	3/8	13,5	7,5	23,10	25,20	18	50	19,93
TB220812	8	1/2	15,0	10,0	24,00	25,50	24	25	37,70
TB221014	10	1/4	17,0	6,5	26,70	23,35	16	50	14,40
TB221038	10	3/8	17,0	7,5	26,70	25,00	18	50	17,63
TB221012	10	1/2	17,0	9,0	26,70	29,30	21	25	29,73
TB221214	12	1/4	20,0	6,5	28,90	24,35	16	25	17,14
TB221238	12	3/8	20,0	7,5	28,90	26,50	18	25	20,51
TB221212	12	1/2	20,0	9,0	28,90	29,30	21	25	28,32

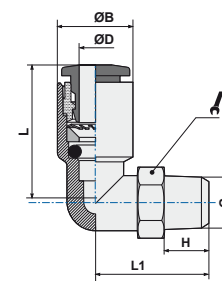


ART. **TB22C**

Swivel elbow male adaptor tapered



COD.	ØD	G	ØB	H	L	L1			
TB22C0418	4	1/8	11,0	7,5	19,0	20,5	10	100	6,67
TB22C0414	4	1/4	11,0	9,5	19,0	20,0	14	100	12,46
TB22C0438	4	3/8	11,0	10,5	19,0	21,0	17	25	19,82
TB22C0618	6	1/8	13,0	7,5	19,8	21,5	10	100	7,34
TB22C0614	6	1/4	13,0	9,5	19,8	21,0	14	100	13,02
TB22C0638	6	3/8	13,0	10,5	19,8	22,0	17	25	20,04
TB22C0612	6	1/2	13,0	13,5	19,8	25,5	21	10	34,22
TB22C0818	8	1/8	14,5	7,5	23,7	22,3	10	100	8,27
TB22C0814	8	1/4	14,5	9,5	23,7	21,8	14	100	13,94
TB22C0838	8	3/8	14,5	10,5	23,7	22,8	17	50	21,49
TB22C0812	8	1/2	14,5	13,5	23,7	26,3	21	10	35,12
TB22C1018	10	1/8	18,4	7,5	27,8	26,9	14	50	16,55
TB22C1014	10	1/4	18,4	9,5	27,8	28,4	14	50	18,45
TB22C1038	10	3/8	18,4	10,5	27,8	24,7	17	50	22,21
TB22C1012	10	1/2	19,0	13,5	27,8	28,2	21	25	35,70
TB22C1218	12	1/8	21,0	7,5	29,5	28,2	15	25	20,55
TB22C1214	12	1/4	21,0	9,5	29,5	29,7	15	25	22,32
TB22C1238	12	3/8	21,0	10,5	29,5	26,0	17	50	24,18
TB22C1212	12	1/2	21,0	13,5	29,5	29,5	21	25	35,40

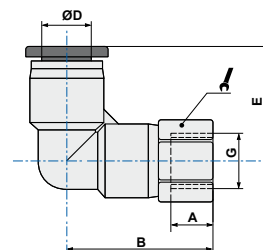


ART. **TB22F**

Female swivel elbow adaptor



COD.	ØD	G	A	B	E			
TB22F04M5	4	M5	5,5	20,5	19,0	10	50	9,17
TB22F0418	4	1/8	8,5	24,0	19,0	14	50	14,80
TB22F0414	4	1/4	11,0	27,0	19,0	17	50	20,24
TB22F06M5	6	M5	6,0	20,7	19,2	12	50	13,27
TB22F0618	6	1/8	8,5	24,2	19,2	14	50	16,85
TB22F0614	6	1/4	11,0	27,2	19,2	17	50	21,91
TB22F0638	6	3/8	12,0	28,7	19,2	21	25	26,37
TB22F0818	8	1/8	8,0	27,0	23,0	14	50	19,27
TB22F0814	8	1/4	11,0	30,5	23,0	17	50	23,47
TB22F0838	8	3/8	12,0	32,0	23,0	21	25	32,70
TB22F1014	10	1/4	11,0	34,3	28,2	17	25	34,59
TB22F1038	10	3/8	12,0	35,8	28,2	21	25	38,84
TB22F1012	10	1/2	14,0	38,8	28,2	24	10	47,77
TB22F1214	12	1/4	11,0	37,0	29,5	21	25	57,88
TB22F1238	12	3/8	12,0	38,0	29,5	21	25	45,98
TB22F1212	12	1/2	14,0	40,5	29,5	24	10	52,68

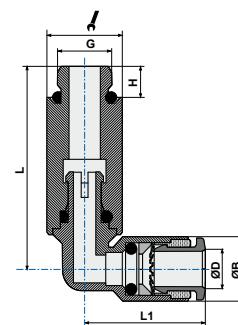


ART. **TB22L**

Swivel longer elbow male adaptor parallel



COD.	ØD	G	ØB	H	L	L1			
TB22L04M5	4	M5	11,0	3,5	34,5	18,6	10	25	18,44
TB22L0418	4	1/8	9,5	5,5	35,9	17,4	13	25	23,78
TB22L06M5	6	M5	13,0	3,5	37,2	19,6	12	25	24,07
TB22L0618	6	1/8	11,5	5,5	35,9	20,8	13	25	24,21
TB22L0818	8	1/8	13,5	5,5	38,2	23,1	13	25	25,17
TB22L0814	8	1/4	14,5	7,5	46,8	22,8	17	25	46,55

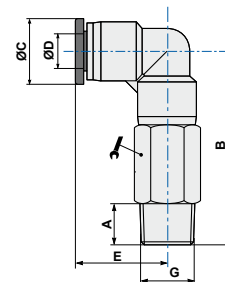


ART. **TB22LC**

Swivel longer elbow male adaptor tapered



COD.	ØD	G	A	B	ØC	E			
TB22LC0418	4	1/8	7,5	37,0	11,0	18,6	10	25	14,74
TB22LC0414	4	1/4	9,5	40,0	11,0	18,6	14	25	19,89
TB22LC0618	6	1/8	7,5	40,5	13,0	19,6	12	25	22,41
TB22LC0614	6	1/4	9,5	43,0	13,0	19,6	14	25	24,74
TB22LC0638	6	3/8	10,5	44,5	13,0	19,6	17	25	31,65
TB22LC0818	8	1/8	7,5	44,8	14,5	22,8	14	25	34,35
TB22LC0814	8	1/4	9,5	46,8	14,5	22,8	14	25	32,40
TB22LC0838	8	3/8	10,5	48,3	14,5	22,8	17	25	41,71
TB22LC1018	10	1/8	7,5	55,0	18,5	28,5	17	25	35,12
TB22LC1014	10	1/4	9,5	57,0	18,5	28,5	17	25	65,78
TB22LC1038	10	3/8	10,5	58,0	18,5	28,5	17	25	55,75
TB22LC1012	10	1/2	13,5	61,5	18,5	28,5	21	10	57,90
TB22LC1214	12	1/4	9,5	61,5	21,0	29,5	21	10	105,46
TB22LC1238	12	3/8	10,5	62,5	21,0	29,5	21	10	100,28
TB22LC1212	12	1/2	13,5	65,5	21,0	29,5	21	10	92,26

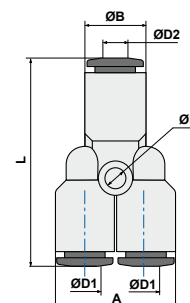


ART. **TB23**

Y connector



COD.	ØD1	ØD2	ØE	ØB	A	L		
TB230400	4	4	3,2	9,5	19,0	33,3	50	2,98
TB230406	4	6	3,2	11,5	19,0	36,2	50	3,56
TB230600	6	6	3,2	11,5	23,0	39,2	50	4,83
TB230608	6	8	3,2	13,5	23,0	42,7	50	5,26
TB230800	8	8	3,2	13,5	27,0	42,7	50	6,29
TB230810	8	10	3,2	17,0	27,0	49,0	25	7,84
TB231000	10	10	4,3	17,0	34,0	49,4	25	11,16
TB231012	10	12	4,3	20,0	34,0	50,8	10	14,12
TB231200	12	12	4,2	20,0	40,0	53,2	10	16,73

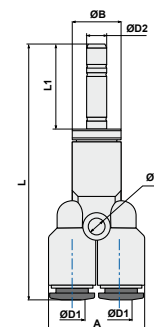


ART. **TB23L0**

Plug-in Y connector



COD.	ØD1	ØD2	ØB	A	ØE	L	L1		
TB2304L0	4	4	9,5	19	3,2	50,0	16,7	50	6,69
TB2306L0	6	6	11,5	23	3,2	57,6	19,5	50	11,19
TB2308L0	8	8	13,5	27	3,2	62,6	21,0	50	15,24
TB2310L0	10	10	17,0	34	4,3	72,3	24,0	25	24,64
TB2312L0	12	12	20,0	40	4,2	77,1	25,0	10	33,95

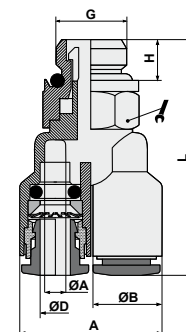


ART. **TB23G**

Y connector with swivel parallel male adapter



COD.	ØD	G	ØA	ØB	H	A	L			
TB23G04M5	4	M5	2,0	11,0	3,5	22,0	39,8	10	50	11,09
TB23G0418	4	1/8	3,0	9,5	5,5	19,0	31,8	13	50	8,57
TB23G0414	4	1/4	3,0	9,5	6,5	19,0	32,8	16	50	21,04
TB23G0438	4	3/8	3,0	11,0	7,5	22,0	46,0	20	25	26,95
TB23G0618	6	1/8	5,0	11,5	5,5	23,0	35,3	13	50	9,66
TB23G0614	6	1/4	5,0	11,5	6,5	23,0	36,8	16	50	15,12
TB23G0638	6	3/8	5,0	13,0	7,5	26,0	46,8	20	25	29,25
TB23G0818	8	1/8	7,0	13,5	5,5	27,0	37,8	13	50	10,71
TB23G0814	8	1/4	7,0	13,5	6,5	27,0	38,8	16	50	14,38
TB23G0838	8	3/8	6,2	14,5	7,5	29,0	49,9	20	25	31,11
TB23G1014	10	1/4	8,2	18,4	7,5	36,4	58,5	17	25	38,11
TB23G1038	10	3/8	8,2	18,4	7,5	36,4	58,5	20	25	41,81
TB23G1012	10	1/2	8,2	18,4	10,0	36,4	62,0	24	10	52,32
TB23G1214	12	1/4	9,5	21,0	7,5	42,0	62,0	21	10	57,62
TB23G1238	12	3/8	9,5	21,0	7,5	42,0	62,0	21	10	52,03
TB23G1212	12	1/2	9,5	21,0	10,0	42,0	65,0	24	10	58,58

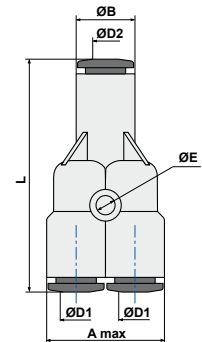


ART. **TB24**

Double Y connector



COD.	ØD1	ØD2	ØE	ØB	Amax	L		
TB240400	4	4	3,2	9,5	20,0	34,8	25	5,97
TB240406	4	6	3,2	11,5	20,0	37,3	25	6,39
TB240408	4	8	3,2	14,5	22,0	38,4	25	12,89
TB240600	6	6	3,2	11,5	24,0	40,2	25	9,02
TB240608	6	8	3,2	14,5	26,0	39,9	25	16,81
TB240800	8	8	3,2	14,5	29,5	41,6	25	20,07
TB240810	8	10	3,2	17,0	28,0	46,8	25	13,99

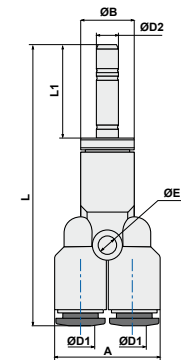


ART. **TB24L0**

Plug-in double Y connector



COD.	ØD1	ØD2	ØE	ØB	A	L	L1		
TB2404L0	4	4	3,2	9,5	19	50,3	16,7	25	9,56
TB2406L0	6	6	3,2	11,5	24	59,0	19,5	25	14,15
TB2408L0	8	8	3,2	13,5	28	64,0	21,0	25	24,65

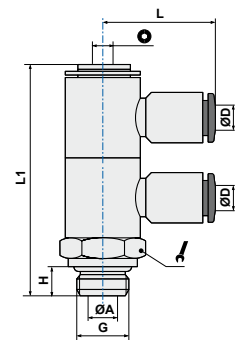


ART. **TB33**

Swivel double banjo stem



COD.	ØD	G	ØA	H	L1	L				
TB3304M5	4	M5	2,0	4,0	28,0	19,7	2,5	14	25	5,88
TB330418	4	1/8	5,5	5,5	43,3	21,3	3	14	25	22,33
TB330618	6	1/8	5,5	5,5	43,3	24,6	3	14	25	23,17
TB330614	6	1/4	7,8	6,5	50,0	25,8	4	18	25	42,26
TB330818	8	1/8	5,5	5,5	43,3	24,9	3	14	25	23,66
TB330814	8	1/4	7,8	6,5	50,0	26,6	4	18	25	44,98
TB331014	10	1/4	7,8	6,5	50,0	28,7	4	18	25	45,86

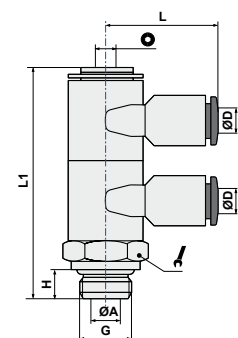


ART. **TB33B**

Double banjo universal male



COD.	ØD	G	ØA	H	L1	L				
TB33B04M5	4	M5	2,0	4,0	28,0	19,7	2,5	14	10	7,90
TB33B0618	6	1/8	5,5	5,5	43,3	24,6	3	14	10	19,88
TB33B0814	8	1/4	7,8	6,5	50,0	26,6	4	18	10	48,50

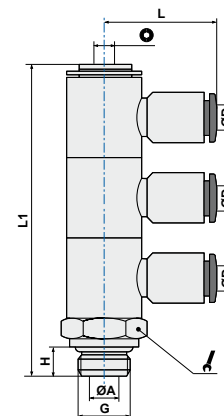


ART. **TB34**

Swivel triple banjo stem



COD.	ØD	G	ØA	H	L1	L	Ø	🔧	📦	📊
TB340418	4	1/8	5,5	5,5	58,4	21,3	3	14	10	28,50
TB340618	6	1/8	5,5	5,5	58,4	24,6	3	14	10	30,06
TB340818	8	1/8	5,5	5,5	58,4	24,9	3	14	10	56,19
TB340614	6	1/4	7,8	6,5	67,1	25,8	4	18	10	30,58
TB340814	8	1/4	7,8	6,5	67,1	26,6	4	18	10	56,63
TB341014	10	1/4	7,8	6,5	67,1	28,7	4	18	10	60,71

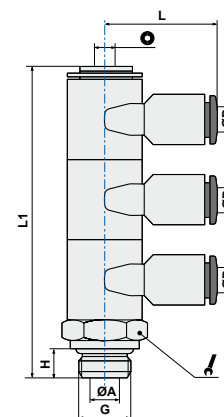


ART. **TB34B**

Triple banjo universal male L



COD.	ØD	G	ØA	H	L1	L	Ø	🔧	📦	📊
TB34B0618	6	1/8	5,5	5,5	58,4	24,6	3	14	10	34,58
TB34B0814	8	1/4	7,8	6,5	67,1	26,6	4	18	10	62,84



ART. **TB90**

Tube blanking cap



COD.	ØD	ØD1	L	📦	📊
TB900400	4	11,5	17,5	100	1,97
TB900600	6	13,5	17,7	100	2,56
TB900800	8	15	21,3	100	3,37
TB901000	10	19	25,0	50	6,84
TB901200	12	21,5	26,0	50	8,59

